

## BEFORE YOU READ...

### Exercise 1 – Match each word to its definition (souligne de la même couleur pour plus de visibilité)

Efficient (adj)	The busiest time to travel.
pleasant (adj)	To connect to a power source.
to plug in (verb)	A drug or herb used to maintain health or treat a health issue.
to charge (verb)	The plants on a farm that make food, fruit and vegetables.
sensor (noun)	Nice.
crops (noun)	To give something energy.
rush hour (noun)	To reduce speed.
a medicine (noun)	A device that measures something and responds to it.
breathe (verb)	To take air into the lungs and expel it.
to slow down (verb)	Quick, easy, and useful.
a traffic jam (noun)	Information for drivers
a road sign	Stationary or very slow-moving vehicles, caused by roadworks, an accident, or heavy congestion.

### Exercise 2 – Look at the pictures on the document. Answer this question.

What is a smart city ? .....

Imagine 2 things that will be different in our daily life in 2025.

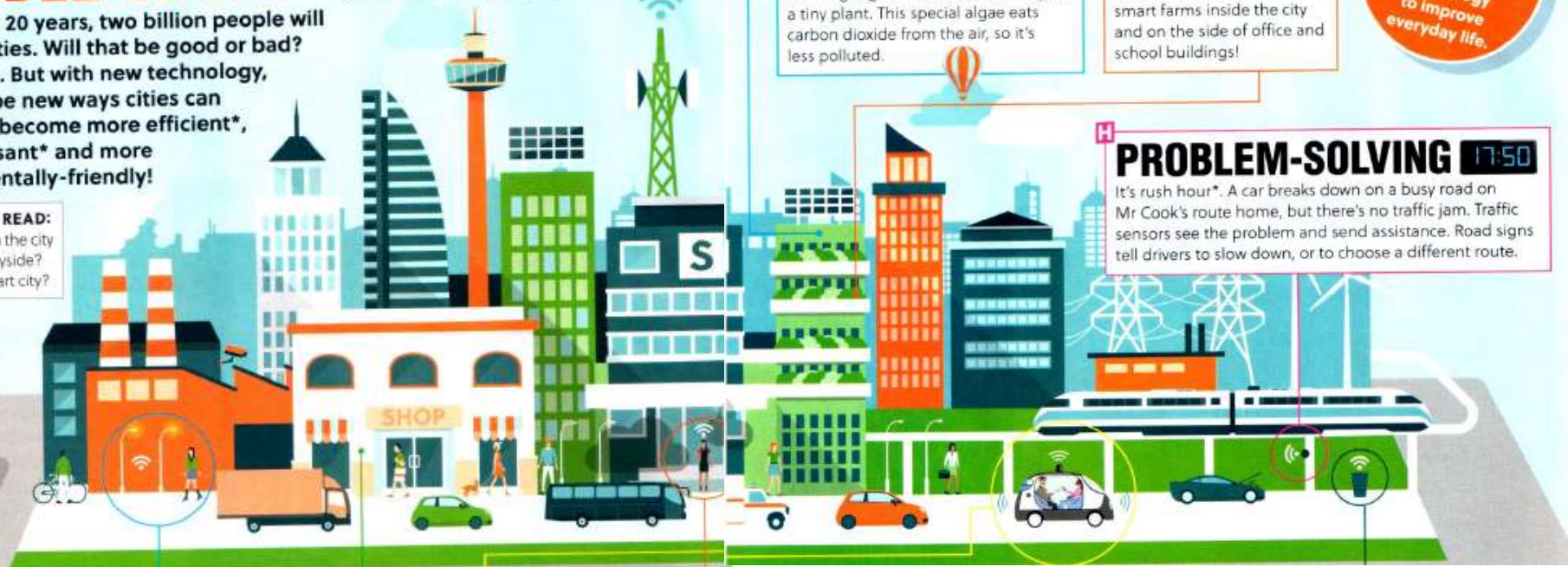
.....

# SMART CITIES

In the next 20 years, two billion people will move to cities. Will that be good or bad? It depends. But with new technology, there will be new ways cities can change to become more efficient\*, more pleasant\* and more environmentally-friendly!

**BEFORE YOU READ:**

- Do you live in the city or the countryside?
- What is a smart city?



It's 2025. TEAM spends the day in a smart city with the Cook family.

## A LIGHTING 06:45

Mrs Cook leaves for work early in the morning. When she walks down the road, the street lights will switch on. When she's gone, they'll switch off again. This saves energy and stops light pollution.

## B DRIVING 07:45

Mr Cook drives to work. In fact, the electric car drives him to work. Why? It's a driverless car! And he doesn't have to plug\* it in! Why? The road charges\* his car as he drives!

## C HEALTH 08:15

Jennifer Cook is leaving for school. She has an allergy. Pollen sensors\* tell her phone when the air quality is bad and when to take her medicine.

## D RUBBISH 08:20

Jennifer Cook eats a protein bar on the way to school. She puts the wrapper in the bin. The bin is full. A sensor in the bin tells the waste management company to come and empty it.

## E SHOPPING 13:15

Mrs Cook goes shopping in her lunch break. She doesn't use any cash or a card. She can pay with her fingerprint or face!

## F POLLUTION 14:00

Jennifer has a P.E. lesson. She can breathe easily thanks to a smart idea about air pollution. Her school building is green. It's covered in algae, a tiny plant. This special algae eats carbon dioxide from the air, so it's less polluted.

## G FOOD 15:30

After school, Jennifer gets a healthy snack. She buys city-grown fruit and vegetables! Now, crops\* are grown in smart farms inside the city and on the side of office and school buildings!

What is a 'Smart City'?  
A city that uses technology to improve everyday life.

## H PROBLEM-SOLVING 17:50

It's rush hour\*. A car breaks down on a busy road on Mr Cook's route home, but there's no traffic jam. Traffic sensors see the problem and send assistance. Road signs tell drivers to slow down, or to choose a different route.

## READING COMPREHENSION

Exercise – Read about the smart city. Write the correct letter in each box. Explain.

	Letter?	Explain what will cause this. What will be different in the future? (cite le texte)
1.This will stop litter and rats on the streets		
2.This will save petrol.		
3.This will limit traffic delays.		
4.It will be easier and safer top pay for your lunch.		
5.Food will be local and cheaper.		
6.This will give the city cleaner, less polluted air.		

## DISCUSS

**What are the best things about life in smart cities ?**

.....  
.....  
.....

**What are the worst things ?**

.....  
.....  
.....

**Would you like to live in a smart city ? Why ?**

(Utilise l'expression de l'opinion, du goût et explique en t'appuyant du texte)

.....  
.....  
.....